

Anti-H3C1 Antibody, Mouse Monoclonal, D3F

Catalog: **CM00037HuM10-D3F**50 μ L

Basic Info

Host

Mouse

Conjugate

None

Concentration

1mg/mL

Physical State

Liquid

Clone No

D3F

Species Reactivity

Predict reacts with: Human/Mouse/Rat

Clonality, Isotype

/

Immunogen

/

Purification

Immunogen affinity purified

Applications

WB/IHC

Property

Form & Buffer :

Supplied in PBS, 50% glycerol and less than 0.02% sodium azide, PH7.4.

Specificity / Sensitivity :

CM00037HuM10-D3F recognizes endogenous levels of Human H3C1

Applications

The application notes include recommended starting dilutions; optimal dilutions/concentrations should be determined by the end user.

WB: 1:500-1:5000

IHC: 1:30-1:300

Usage and Storage

Store at 4°C for frequent use.

Aliquot and store at -20°C for 12 months.

Avoid repeated freezing/thawing and violent shaking.

Please centrifuge it, before using.

QC Data

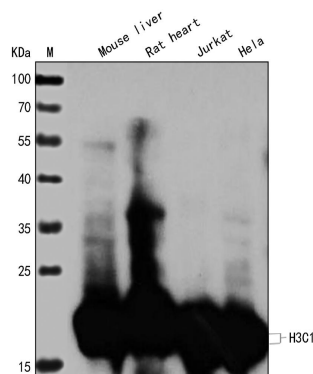


Figure1. Use in WB

Sample:

Lane1. Mouse liver tissue(+++); Lane2. rat heart(+++); Lane3. Jurkat(+++); Lane4. HeLa(+++)

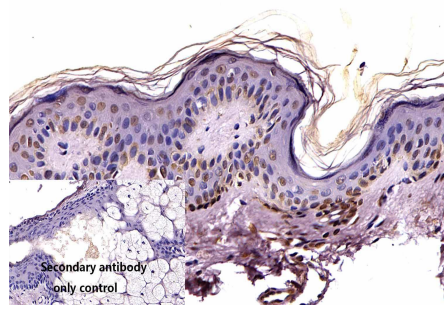
Primary Ab:

1:500 Anti-H3C1 Antibody, Mouse Monoclonal,D3F

Second Ab:

1: 20000 HRP Goat Anti-Rabbit IgG (H+L)

Figure2. Use in IHC



Sample:

Human skin、 monkey brain stem、
monkey epididymis、 monkey kidney、
monkey rectum、 monkey skeletal
muscle、 monkey testis、 monkey
Submandibular gland sections

Primary Ab:

1:30 Anti-H3C1 Antibody, Mouse
Monoclonal,D3F

Second Ab:

1: 2000 Mouse specific IHC polymer
detection kit HRP/DAB