

Anti-PPIB Antibody, Mouse Monoclonal, B1T

Catalog: **CM00970HuM10-B1T**50 μ L

Basic Info

Host

Mouse

Conjugate

None

Concentration

1mg/mL

Physical State

Liquid

Clone No

B1T

Species Reactivity

Predict reacts with: Human/Mouse/Rat

Clonality, Isotype

/

Immunogen

A synthetic peptide of human PPIB

Purification

Immunogen affinity purified

Applications

WB

Property

Form & Buffer :

Supplied in PBS, 50% glycerol and less than 0.02% sodium azide, PH7.4.

Specificity / Sensitivity :

CM00970HuM10-B1T recognizes endogenous levels of Human PPIB

Applications

The application notes include recommended starting dilutions; optimal dilutions/concentrations should be determined by the end user.

WB: 1:1000-1:20000

Usage and Storage

Store at 4°C for frequent use.

Aliquot and store at -20°C for 12 months.

Avoid repeated freezing/thawing and violent shaking.

Please centrifuge it, before using.

QC Data

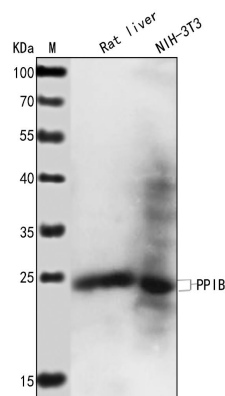


Figure1. Use in WB

Sample: Lane 1. Rat liver; Lane 2. NIH-3T3**Primary Ab:** 1:1000 Anti-PPIB Antibody, Mouse Monoclonal,B1T**Second Ab:** 1: 20000 HRP Goat Anti-Rabbit IgG (H+L)