

## Anti-TUBB Antibody, Mouse Monoclonal, H5F

Catalog: **CM01143HuM10-H5F**50 $\mu$ L

### Basic Info

**Host**

Mouse

**Conjugate**

None

**Concentration**

1mg/mL

**Physical State**

Liquid

**Clone No**

H5F

**Species Reactivity**

Predict reacts with: Human/Mouse/Rat

**Clonality, Isotype**

/

**Immunogen**

/

**Purification**

Immunogen affinity purified

**Applications**

WB/IHC

### Property

**Form & Buffer :**

Supplied in PBS, 50% glycerol and less than 0.02% sodium azide, PH7.4.

**Specificity / Sensitivity :**

CM01143HuM10-H5F recognizes endogenous levels of Human TUBB

### Applications

The application notes include recommended starting dilutions; optimal dilutions/concentrations should be determined by the end user.

WB: 1:2000-1:20000

IHC: 1:200-1:2000

### Usage and Storage

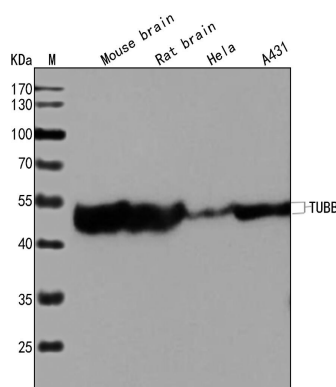
Store at 4°C for frequent use.

Aliquot and store at -20°C for 12 months.

Avoid repeated freezing/thawing and violent shaking.

Please centrifuge it, before using.

### QC Data



### Figure1. Use in WB

**Sample:**

Lane1. Mouse brain(+++); Lane2. Rat brain(+++); Lane3. HeLa(+); Lane4. A431(+++)

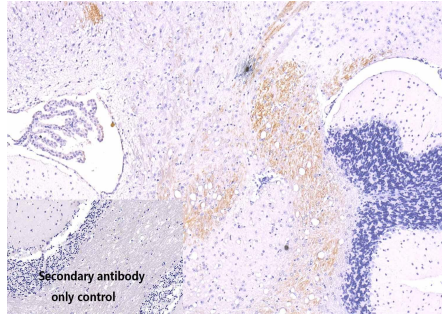
**Primary Ab:**

1:2000 Anti-H2BC3 Antibody, Mouse Monoclonal,E3T

**Second Ab:**

1: 20000 HRP Goat Anti-Rabbit IgG (H+L)

**Figure2. Use in IHC**



**Sample:** Mouse brain sections

**Primary Ab:** 1:200 Anti-TUBB Antibody, Mouse Monoclonal,H5F

**Second Ab:** 1: 2000 Mouse specific IHC polymer detection kit HRP/DAB



