

## Anti-TUBE1 Antibody, Mouse Monoclonal, B3T

Catalog: **CM01151HuM10-B3T**

50 $\mu$ L

### Basic Info

#### Host

Mouse

#### Conjugate

None

#### Concentration

1mg/mL

#### Physical State

Liquid

#### Clone No

B3T

#### Species Reactivity

Predict reacts with: Human/Mouse/Rat

#### Clonality, Isotype

/

#### Immunogen

A synthetic peptide of human TUBE1

#### Purification

Immunogen affinity purified

#### Applications

WB/IHC

### Property

#### Form & Buffer :

Supplied in PBS, 50% glycerol and less than 0.02% sodium azide, PH7.4.

#### Specificity / Sensitivity :

CM01151HuM10-B3T recognizes endogenous levels of Human TUBE1

### Applications

The application notes include recommended starting dilutions; optimal dilutions/concentrations should be determined by the end user.

WB: 1:200-1:1000

IHC: 1:30-1:300

### Usage and Storage

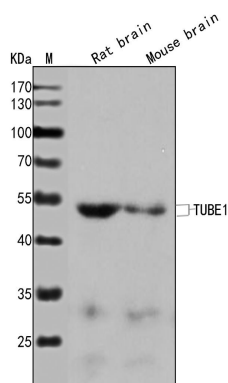
Store at 4°C for frequent use.

Aliquot and store at -20°C for 12 months.

Avoid repeated freezing/thawing and violent shaking.

Please centrifuge it, before using.

### QC Data



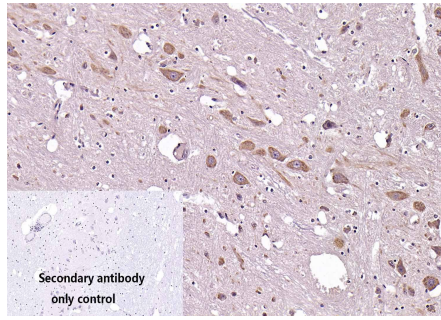
#### Figure1. Use in WB

**Sample:** Lane1. Rat brain(+++); Lane2. Mouse brain(+++)

**Primary Ab:** 1:200 Anti-TUBE1 Antibody, Mouse Monoclonal,B3T

**Second Ab:** 1: 20000 HRP Goat Anti-Rabbit IgG (H+L)

**Figure2. Use in IHC**



**Sample:** Monkey brain sections

**Primary Ab:** 1:30 Anti-TUBE1 Antibody, Mouse Monoclonal, B3T

**Second Ab:** 1: 2000 Mouse specific IHC polymer detection kit HRP/DAB