

Anti-MMP2 Antibody, Mouse Monoclonal, H1T

Catalog: **MA00100HuM10-H1T**

50 μ L

Basic Info

Host

Mouse

Conjugate

None

Concentration

1mg/mL

Physical State

Liquid

Clone No

H1T

Species Reactivity

Predict reacts with: Human/Mouse/Rat

Clonality, Isotype

/

Immunogen

A synthetic peptide of human MMP2

Purification

Immunogen affinity purified

Applications

IHC

Property

Form & Buffer :

Supplied in PBS, 50% glycerol and less than 0.02% sodium azide, PH7.4.

Specificity / Sensitivity :

MA00100HuM10-H1T recognizes endogenous levels of Human MMP2

Applications

The application notes include recommended starting dilutions; optimal dilutions/concentrations should be determined by the end user.

IHC: 1:30-1:300

Usage and Storage

Store at 4°C for frequent use.

Aliquot and store at -20°C for 12 months.

Avoid repeated freezing/thawing and violent shaking.

Please centrifuge it, before using.

QC Data

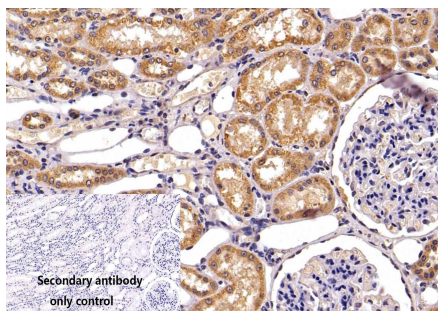


Figure1. Use in IHC

Sample: Human Liver cancer、Monkey kidney、Monkey lung、Monkey epididymis sections

Primary Ab: 1:30 Anti-MMP2 Antibody, Mouse Monoclonal,H1T

Second Ab: 1:2000 Mouse specific IHC polymer detection kit HRP/DAB

