

Anti-GSK3B Antibody, Mouse Monoclonal, A6T

Catalog: **MA00113HuM10-A6T**50 μ L

Basic Info

Host

Mouse

Conjugate

None

Concentration

1mg/mL

Physical State

Liquid

Clone No

A6T

Species Reactivity

Predict reacts with: Human/Mouse/Rat

Clonality, Isotype

/

Immunogen

A synthetic peptide of human GSK3B

Purification

Immunogen affinity purified

Applications

WB/IHC

Property

Form & Buffer :

Supplied in PBS, 50% glycerol and less than 0.02% sodium azide, PH7.4.

Specificity / Sensitivity :

MA00113HuM10-A6T recognizes endogenous levels of Human GSK3B

Applications

The application notes include recommended starting dilutions; optimal dilutions/concentrations should be determined by the end user.

WB: 1:200-1:3000

IHC: 1:30-1:300

Usage and Storage

Store at 4°C for frequent use.

Aliquot and store at -20°C for 12 months.

Avoid repeated freezing/thawing and violent shaking.

Please centrifuge it, before using.

QC Data

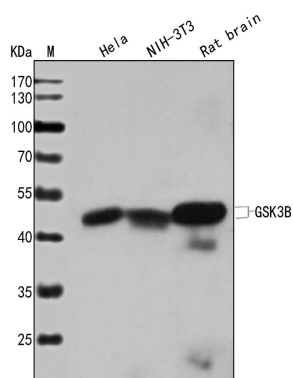


Figure1. Use in WB

Sample:

Lane1. HeLa(+++); Lane2. NIH-3T3(+++); Lane3. Rat brain(+++)

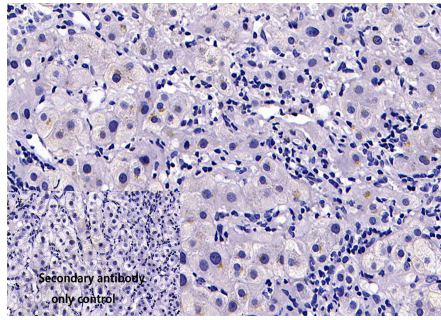
Primary Ab:

1:200 Anti-GSK3B Antibody, Mouse Monoclonal,A6T

Second Ab:

1: 20000 HRP Goat Anti-Rabbit IgG (H+L)

Figure2. Use in IHC



Sample: Human Liver cancer sections

Primary Ab: 1:30 Anti-GSK3B Antibody, Mouse Monoclonal,A6T

Second Ab: 1: 2000 Mouse specific IHC polymer detection kit HRP/DAB