

Anti-PRKAA1 Antibody, Mouse Monoclonal, B3F

Catalog: **MA00162HuM10-B3F**50 μ L

Basic Info

Host

Mouse

Conjugate

None

Concentration

1mg/mL

Physical State

Liquid

Clone No

B3F

Species Reactivity

Predict reacts with: Human/Mouse/Rat

Clonality, Isotype

/

Immunogen

/

Purification

Immunogen affinity purified

Applications

WB/IHC

Property

Form & Buffer :

Supplied in PBS, 50% glycerol and less than 0.02% sodium azide, PH7.4.

Specificity / Sensitivity :

MA00162HuM10-B3F recognizes endogenous levels of Human PRKAA1

Applications

The application notes include recommended starting dilutions; optimal dilutions/concentrations should be determined by the end user.

WB: 1:200-1:2000

IHC: 1:30-1:300

Usage and Storage

Store at 4°C for frequent use.

Aliquot and store at -20°C for 12 months.

Avoid repeated freezing/thawing and violent shaking.

Please centrifuge it, before using.

QC Data

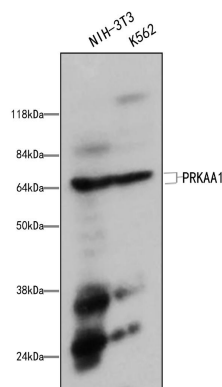
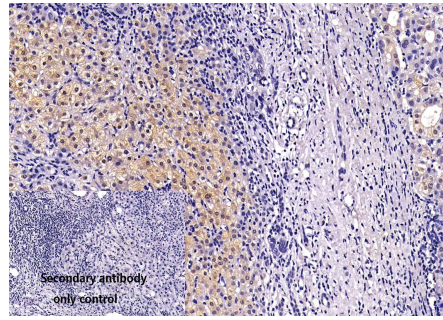
**Figure1. Use in WB****Sample:** Lane1.NIH/3T3(+); Lane2.K562(+)**Primary Ab:** 1:200 Anti-PRKAA1 Antibody, Mouse Monoclonal,B3F**Second Ab:** 1: 20000 HRP Goat Anti-Rabbit IgG (H+L)

Figure2. Use in IHC



Sample: Human liver cancer、 monkey pancreas、 monkey epididymis sections

Primary Ab: 1:30 Anti-PRKAA1 Antibody, Mouse Monoclonal,B3F

Second Ab: 1: 2000 Mouse specific IHC polymer detection kit HRP/DAB