

Anti-CHUK Antibody, Mouse Monoclonal, C3T

Catalog: **MA00171HuM10-C3T**50 μ L

Basic Info

Host

Mouse

Conjugate

None

Concentration

1mg/mL

Physical State

Liquid

Clone No

C3T

Species Reactivity

Predict reacts with: Human/Mouse/Rat

Clonality, Isotype

/

Immunogen

Recombinant human CHUK protein

Purification

Immunogen affinity purified

Applications

WB/IHC

Property

Form & Buffer :

Supplied in PBS, 50% glycerol and less than 0.02% sodium azide, PH7.4.

Specificity / Sensitivity :

MA00171HuM10-C3T recognizes endogenous levels of Human CHUK

Applications

The application notes include recommended starting dilutions; optimal dilutions/concentrations should be determined by the end user.

WB: 1:200-1:1000

IHC: 1:30-1:600

Usage and Storage

Store at 4°C for frequent use.

Aliquot and store at -20°C for 12 months.

Avoid repeated freezing/thawing and violent shaking.

Please centrifuge it, before using.

QC Data

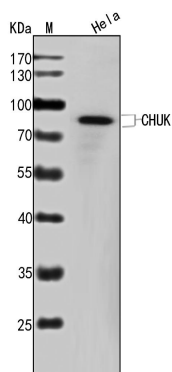
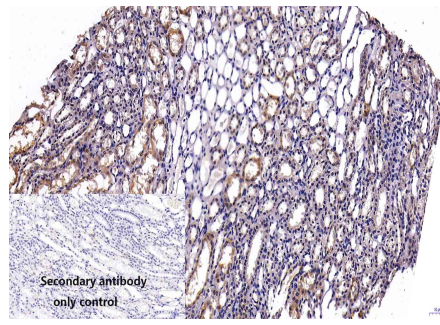


Figure1. Use in WB

Sample: Lane1. HeLa**Primary Ab:** 1:200 Anti-CHUK Antibody, Mouse Monoclonal,C3T**Second Ab:** 1: 20000 HRP Goat Anti-Rabbit IgG (H+L)

Figure2. Use in IHC



Sample: Monkey kidney sections

Primary Ab: 1:30 Anti-CHUK Antibody, Mouse Monoclonal, C3T

Second Ab: 1: 2000 Mouse specific IHC polymer detection kit HRP/DAB