

## Anti-HSPA5 Antibody, Mouse Monoclonal, G3T

Catalog: **MA00227HuM10-G3T**50 $\mu$ L

### Basic Info

**Host**

Mouse

**Conjugate**

None

**Concentration**

1mg/mL

**Physical State**

Liquid

**Clone No**

G3T

**Species Reactivity**

Predict reacts with: Human/Mouse/Rat

**Clonality, Isotype**

/

**Immunogen**

A synthetic peptide of human HSPA5

**Purification**

Immunogen affinity purified

**Applications**

WB/IHC

### Property

**Form & Buffer :**

Supplied in PBS, 50% glycerol and less than 0.02% sodium azide, PH7.4.

**Specificity / Sensitivity :**

MA00227HuM10-G3T recognizes endogenous levels of Human HSPA5

### Applications

The application notes include recommended starting dilutions; optimal dilutions/concentrations should be determined by the end user.

WB: 1:1000-1:6000

IHC: 1:100-1:500

### Usage and Storage

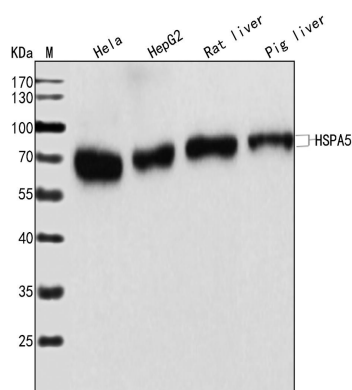
Store at 4°C for frequent use.

Aliquot and store at -20°C for 12 months.

Avoid repeated freezing/thawing and violent shaking.

Please centrifuge it, before using.

### QC Data

**Figure1. Use in WB****Sample:**

Lane1. HeLa; Lane2. HepG2; Lane3. Rat liver; Lane4. Pig liver

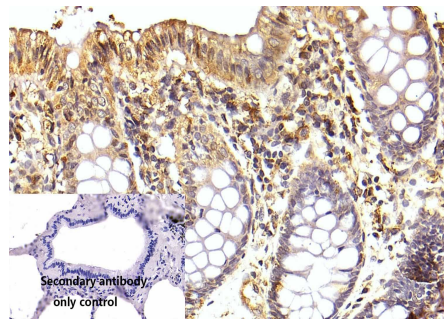
**Primary Ab:**

1:1000 Anti-HSPA5 Antibody, Mouse Monoclonal,G3T

**Second Ab:**

1: 20000 HRP Goat Anti-Rabbit IgG (H+L)

**Figure2. Use in IHC**



**Sample:**

human colon、human intestine、human skin、monkey brain stem、monkey brain、monkey cerebellum、monkey epididymis、monkey heart、monkey kidney、monkey liver、monkey pancreas、monkey salivary gland、monkey testis

**Primary Ab:**

1:200 Anti-HSPA5 Antibody, Mouse Monoclonal,G3T

**Second Ab:**

1: 2000 Mouse specific IHC polymer detection kit HRP/DAB