

Anti-KRT7 Antibody, Mouse Monoclonal, D7T

Catalog: **MA00879HuM10-D7T**50 μ L

Basic Info

Host

Mouse

Conjugate

None

Concentration

1mg/mL

Physical State

Liquid

Clone No

D7T

Species Reactivity

Predict reacts with: Human/Mouse/Rat

Clonality, Isotype

/

Immunogen

A synthetic peptide of human KRT7

Purification

Immunogen affinity purified

Applications

WB/IHC

Property

Form & Buffer :

Supplied in PBS, 50% glycerol and less than 0.02% sodium azide, PH7.4.

Specificity / Sensitivity :

MA00879HuM10-D7T recognizes endogenous levels of human KRT7

Applications

The application notes include recommended starting dilutions; optimal dilutions/concentrations should be determined by the end user.

WB: 1:300-1:3000

IHC: 1:100-1:1000

Usage and Storage

Store at 4°C for frequent use.

Aliquot and store at -20°C for 12 months.

Avoid repeated freezing/thawing and violent shaking.

Please centrifuge it, before using.

QC Data

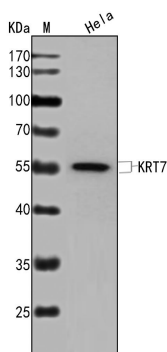
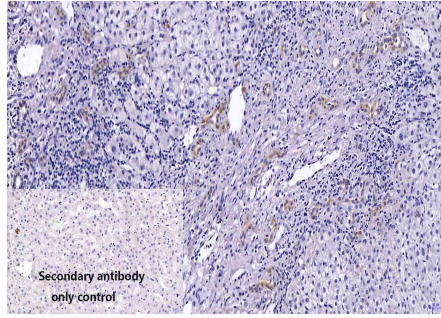


Figure1. Use in WB

Sample: Lane1. HeLa**Primary Ab:** 1:300 Anti-KRT7 Antibody, Mouse Monoclonal,D7T**Second Ab:** 1: 20000 HRP Goat Anti-Rabbit IgG (H+L)

Figure2. Use in IHC



Sample: Human liver cancer sections

Primary Ab: 1:100 Anti-KRT7 Antibody, Mouse Monoclonal,D7T

Second Ab: 1: 2000 Mouse specific IHC polymer detection kit HRP/DAB