

Anti-KRT18 Antibody, Mouse Monoclonal, H1F

Catalog: **MA00894HuM10-H1F**50 μ L

Basic Info

Host

Mouse

Conjugate

None

Concentration

1mg/mL

Physical State

Liquid

Clone No

H1F

Species Reactivity

Predict reacts with: Human/Mouse/Rat

Clonality, Isotype

/

Immunogen

/

Purification

Immunogen affinity purified

Applications

WB/IHC

Property

Form & Buffer :

Supplied in PBS, 50% glycerol and less than 0.02% sodium azide, PH7.4.

Specificity / Sensitivity :

MA00894HuM10-H1F recognizes endogenous levels of Human KRT18

Applications

The application notes include recommended starting dilutions; optimal dilutions/concentrations should be determined by the end user.

WB: 1:1000-1:10000

IHC: 1:200-1:2000

Usage and Storage

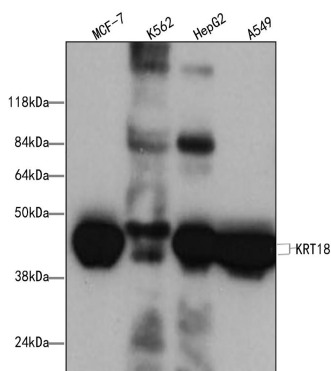
Store at 4°C for frequent use.

Aliquot and store at -20°C for 12 months.

Avoid repeated freezing/thawing and violent shaking.

Please centrifuge it, before using.

QC Data

**Figure1. Use in WB****Sample:**

Lane1.MCF7(++); Lane2. K562(+); Lane3. HepG2(+); Lane4. A549(++)

Primary Ab:

1:1000 Anti-KRT18 Antibody, Mouse Monoclonal,H1F

Second Ab:

1: 20000 HRP Goat Anti-Rabbit IgG (H+L)

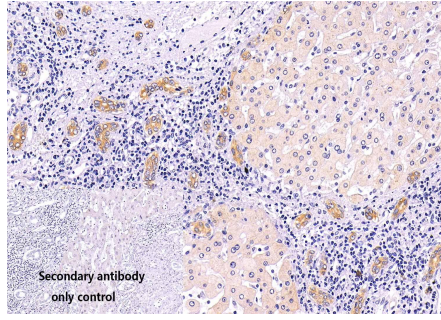
企业地址：江西省赣州市章贡区高新区武当山路1号赣州国家高层次人才科技园（二期）2栋5层

邮箱: biolight_info@163.com网址: <http://biolight.wellanimal.com/>

电话: 0797-8187656

法律声明：如果按照说明书运输、储存和使用，BioLight生物制品符合其特性。BioLight商标，未经许可，不得使用或复制。

Figure2. Use in IHC



Sample: Human liver cancer sections

Primary Ab: 1:200 Anti-KRT18 Antibody, Mouse Monoclonal, H1F

Second Ab: 1: 2000 Mouse specific IHC polymer detection kit HRP/DAB