

Anti-MAP1LC3A Antibody, Mouse Monoclonal, B1F

Catalog: **MA01074HuM10-B1F**50 μ L

Basic Info

Host

Mouse

Conjugate

None

Concentration

1mg/mL

Physical State

Liquid

Clone No

B1F

Species Reactivity

Predict reacts with: Human/Mouse/Rat

Clonality, Isotype

/

Immunogen

/

Purification

Immunogen affinity purified

Applications

WB/IHC

Property

Form & Buffer :

Supplied in PBS, 50% glycerol and less than 0.02% sodium azide, PH7.4.

Specificity / Sensitivity :

MA01074HuM10-B1F recognizes endogenous levels of Human MAP1LC3A

Applications

The application notes include recommended starting dilutions; optimal dilutions/concentrations should be determined by the end user.

WB: 1:200-1:2000

IHC: 1:30-1:300

Usage and Storage

Store at 4°C for frequent use.

Aliquot and store at -20°C for 12 months.

Avoid repeated freezing/thawing and violent shaking.

Please centrifuge it, before using.

QC Data

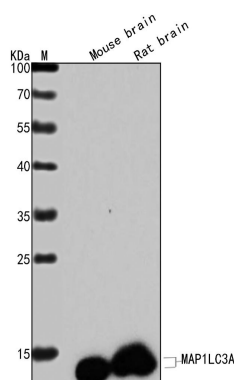


Figure1. Use in WB

Sample:

Lane1. Mouse brain(+++); Lane2. Rat brain(+++)

Primary Ab:

1:200 Anti-MAP1LC3A Antibody, Mouse Monoclonal,B1F

Second Ab:

1: 20000 HRP Goat Anti-Rabbit IgG (H+L)

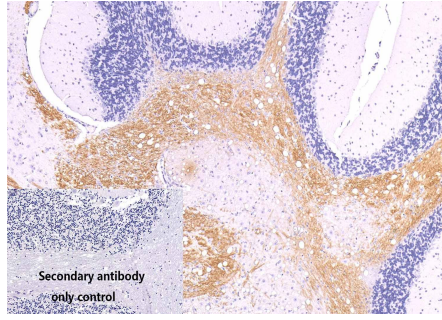
企业地址: 江西省赣州市章贡区高新区武当山路1号赣州国家高层次人才科创园(二期)2栋5层

邮箱: biolight_info@163.com网址: <http://biolight.wellanimal.com/>

电话: 0797-8187656

法律声明: 如果按照说明书运输、储存和使用, Biolight生物制品符合其特性。Biolight商标, 未经许可, 不得使用或复制。

Figure2. Use in IHC



Sample: Mouse brain sections

Primary Ab: 1:30 Anti-MAP1LC3A Antibody, Mouse Monoclonal, B1F

Second Ab: 1: 2000 Mouse specific IHC polymer detection kit HRP/DAB