

## Anti-BSA Antibody, Mouse Monoclonal, E4T

Catalog: MA02000BoM10-E4T

50 $\mu$ L

### Basic Info

**Host**

Mouse

**Conjugate**

None

**Concentration**

1mg/mL

**Physical State**

Liquid

**Clone No**

E4T

**Species Reactivity**

Predict reacts with: Human/Mouse/Rat

**Clonality, Isotype**

/

**Immunogen**

0

**Purification**

Immunogen affinity purified

**Applications**

WB

### Property

**Form & Buffer :**

Supplied in PBS, 50% glycerol and less than 0.02% sodium azide, PH7.4.

**Specificity / Sensitivity :**

MA02000BoM10-E4T recognizes endogenous levels of BSA

### Applications

The application notes include recommended starting dilutions; optimal dilutions/concentrations should be determined by the end user.

WB: 1:1000-1:20000

### Usage and Storage

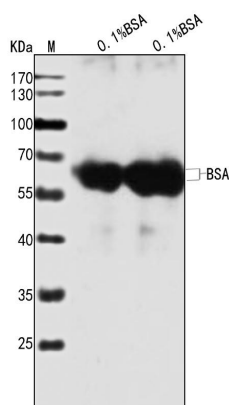
Store at 4°C for frequent use.

Aliquot and store at -20°C for 12 months.

Avoid repeated freezing/thawing and violent shaking.

Please centrifuge it, before using.

### QC Data



### Figure1. Use in WB

**Sample:** Lane 1. 0.1%BSA; Lane 2. 0.1%BSA**Primary Ab:** 1:1000 Anti-BSA Antibody, Mouse Monoclonal,E4T**Second Ab:** 1: 20000 HRP Goat Anti-Rabbit IgG (H+L)