

## Anti-LALBA Antibody, Mouse Monoclonal, E9T

Catalog: **MA03827HuM10-E9T**50 $\mu$ L

### Basic Info

**Host**

Mouse

**Conjugate**

None

**Concentration**

1mg/mL

**Physical State**

Liquid

**Clone No**

E9T

**Species Reactivity**

Predict reacts with: Human/Mouse/Rat

**Clonality, Isotype**

/

**Immunogen**

A synthetic peptide of human LALBA

**Purification**

Immunogen affinity purified

**Applications**

WB

### Property

**Form & Buffer :**

Supplied in PBS, 50% glycerol and less than 0.02% sodium azide, PH7.4.

**Specificity / Sensitivity :**

MA03827HuM10-E9T recognizes endogenous levels of Human LALBA

### Applications

The application notes include recommended starting dilutions; optimal dilutions/concentrations should be determined by the end user.

WB: 1:1000-1:20000

### Usage and Storage

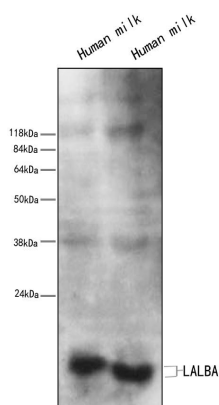
Store at 4°C for frequent use.

Aliquot and store at -20°C for 12 months.

Avoid repeated freezing/thawing and violent shaking.

Please centrifuge it, before using.

### QC Data

**Figure1. Use in WB****Sample:**Lane 1. 1 $\mu$ l human milk; Lane 2. 5 $\mu$ l human milk**Primary Ab:**

1:1000 Anti-LALBA Antibody, Mouse Monoclonal,E9T

**Second Ab:**

1: 20000 HRP Goat Anti-Rabbit IgG (H+L)