

Anti-FH Antibody, Mouse Monoclonal, F1T

Catalog: **MA08303HuM10-F1T**50 μ L

Basic Info

Host

Mouse

Conjugate

None

Concentration

1mg/mL

Physical State

Liquid

Clone No

F1T

Species Reactivity

Predict reacts with: Human/Mouse/Rat

Clonality, Isotype

/

Immunogen

A synthetic peptide of human FH

Purification

Immunogen affinity purified

Applications

WB/IHC

Property

Form & Buffer :

Supplied in PBS, 50% glycerol and less than 0.02% sodium azide, PH7.4.

Specificity / Sensitivity :

MA08303HuM10-F1T recognizes endogenous levels of human FH

Applications

The application notes include recommended starting dilutions; optimal dilutions/concentrations should be determined by the end user.

WB: 1:300-1:3000

IHC: 1:100-1:500

Usage and Storage

Store at 4°C for frequent use.

Aliquot and store at -20°C for 12 months.

Avoid repeated freezing/thawing and violent shaking.

Please centrifuge it, before using.

QC Data

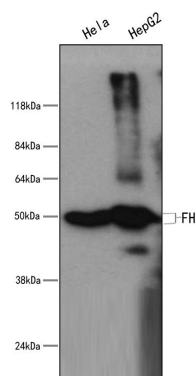
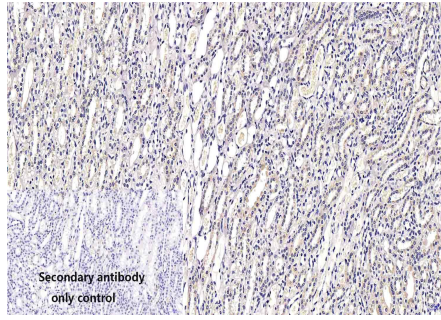
**Figure1. Use in WB****Sample:** Lane1. HeLa; Lane2. HepG2**Primary Ab:** 1:300 Anti-FH Antibody, Mouse Monoclonal,F1T**Second Ab:** 1: 20000 HRP Goat Anti-Rabbit IgG (H+L)

Figure2. Use in IHC



Sample:

Monkey kidney、 Monkey prostate sections

Primary Ab:

1:100 Anti-FH Antibody, Mouse Monoclonal,F1T

Second Ab:

1: 2000 Mouse specific IHC polymer detection kit HRP/DAB