

## Anti-H2BC3 Antibody, Mouse Monoclonal, E3T

Catalog: **MA09338HuM10-E3T**50 $\mu$ L

### Basic Info

**Host**

Mouse

**Conjugate**

None

**Concentration**

1mg/mL

**Physical State**

Liquid

**Clone No**

E3T

**Species Reactivity**

Predict reacts with: Human/Mouse/Rat

**Clonality, Isotype**

/

**Immunogen**

A synthetic peptide of human H2BC3

**Purification**

Immunogen affinity purified

**Applications**

WB/IHC

### Property

**Form & Buffer :**

Supplied in PBS, 50% glycerol and less than 0.02% sodium azide, PH7.4.

**Specificity / Sensitivity :**

MA09338HuM10-E3T recognizes endogenous levels of Human H2BC3

### Applications

The application notes include recommended starting dilutions; optimal dilutions/concentrations should be determined by the end user.

WB: 1:1000-1:10000

IHC: 1:100-1:500

### Usage and Storage

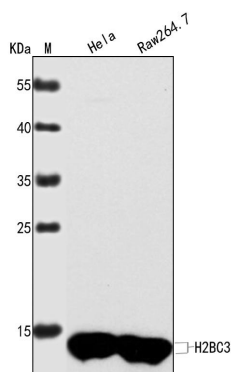
Store at 4°C for frequent use.

Aliquot and store at -20°C for 12 months.

Avoid repeated freezing/thawing and violent shaking.

Please centrifuge it, before using.

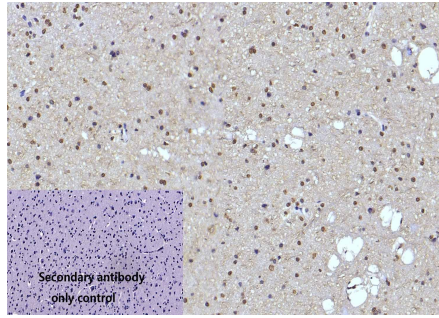
### QC Data



### Figure1. Use in WB

**Sample:** Lane1. HeLa; Lane2. Raw264.7**Primary Ab:** 1:1000 Anti-H2BC3 Antibody, Mouse Monoclonal,E3T**Second Ab:** 1: 20000 HRP Goat Anti-Rabbit IgG (H+L)

**Figure2. Use in IHC**



**Sample:** Monkey brain stem、 Monkey kidney、  
Monkey lung、 Monkey prostate、  
Monkey testis sections

**Primary Ab:** 1:100 Anti-H2BC3 Antibody, Mouse  
Monoclonal,E3T

**Second Ab:** 1: 2000 Mouse specific IHC polymer  
detection kit HRP/DAB



