



Anti-MKI67 Antibody, Rabbit Polyclonal

Synonyms: MKI67, KIA, Ki67P, Antigen Identified By Monoclonal Antibody Ki-67

Basic Info

Catalog

PA00059HuA20

Host

Rabbit

Conjugate

None

Size

50 uL

Concentration

2.0 mg/mL

Physical State

Liquid

Species Reactivity

Human MKI67

Immunogen

A synthetic peptide of human MKI67;

UniprotKB: P46013

Purification

Antigen Affinity Chromatography

Application

IHC

Property

Form & Buffer: Supplied in PBS, 50% glycerol, PH7.4.**Specificity / Sensitivity:** Anti-MKI67 Antibody, Rabbit Polyclonal recognizes endogenous levels of total MKI67 protein.

Applications

The application notes include recommended starting dilutions; optimal dilutions/concentrations should be determined by the end user.

WB: 0.5~5ug/mL IF: 5~20ug/mL

IHC: 5~20ug/mL ICC:5~20ug/mL

Usage and Storage

Shipped at 4°C.

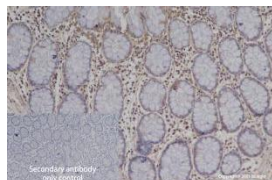
Store at 4°C for frequent use.

Aliquot and store at -20°C for 12 months.

Avoid repeated freezing/thawing and violent shaking.

Please centrifuge it, before using.

QC Data

**Figure1. Use in IHC**

Immunohistochemistry (Formalin/PFA-fixed paraffin-embedded sections) analysis of human colon sections labelling MKI67 with purified PA00059HuA20 at 10ug/ml. Heat mediated antigen retrieval was performed using citrate buffer (pH 6.0). Tissue was counterstained with Hematoxylin. Rabbit specific IHC polymer detection kit HRP/DAB secondary antibody was used at 1/4000 dilution. PBS instead of the primary antibody was used as the negative control.

For Research Use Only!