

Anti-Phosphotyrosine Antibody, Mouse Monoclonal, C1T

Catalog: **PTM011M1-C1T**50 μ L

Basic Info

Host

Mouse

Conjugate

None

Concentration

1mg/mL

Physical State

Liquid

Clone No

C1T

Species Reactivity

Predict reacts with: Human/Mouse/Rat

Clonality, Isotype

/

Immunogen

/

Purification

Immunogen affinity purified

Applications

WB/IHC

Property

Form & Buffer :

Supplied in PBS, 50% glycerol and less than 0.02% sodium azide, PH7.4.

Specificity / Sensitivity :

PTM011M1-C1T recognizes endogenous levels of Phosphotyrosine

Applications

The application notes include recommended starting dilutions; optimal dilutions/concentrations should be determined by the end user.

IHC: 1:100-1:1000

Usage and Storage

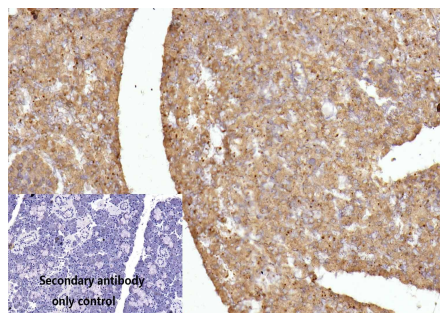
Store at 4°C for frequent use.

Aliquot and store at -20°C for 12 months.

Avoid repeated freezing/thawing and violent shaking.

Please centrifuge it, before using.

QC Data

**Figure1. Use in IHC****Sample:**

Monkey epididymis、Monkey kidney、Monkey salivary gland、Monkey submandibular gland sections

Primary Ab:

1:100 Anti-Phosphotyrosine Antibody, Mouse Monoclonal,C1T

Second Ab:

1:2000 Mouse specific IHC polymer detection kit HRP/DAB