

# Anti-Phospho-CAMK2B-G-D (Thr287) Antibody, Mouse Monoclonal,

Catalog: **PTM044M1-H2T**50 $\mu$ L

## Basic Info

### Host

Mouse

### Conjugate

None

### Concentration

1mg/mL

### Physical State

Liquid

### Clone No

H2T

### Species Reactivity

Predict reacts with: Human/Mouse/Rat

### Clonality, Isotype

/

### Immunogen

A synthetic peptide of human CAMK2B-G-D

### Purification

Immunogen affinity purified

### Applications

IHC

## Property

**Form & Buffer :** Supplied in PBS, 50% glycerol and less than 0.02% sodium azide, PH7.4.

**Specificity / Sensitivity :** PTM044M1-H2T recognizes endogenous levels of Human CAMK2B-G-D

## Applications

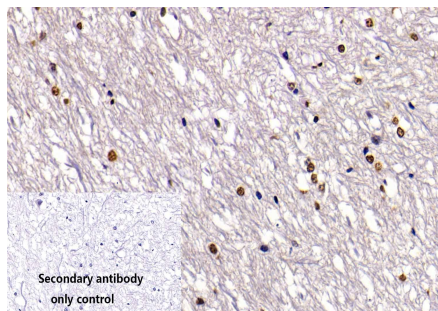
The application notes include recommended starting dilutions; optimal dilutions/concentrations should be determined by the end user.

**IHC: 1:100-1:1000**

## Usage and Storage

Store at 4°C for frequent use.  
Aliquot and store at -20°C for 12 months.  
Avoid repeated freezing/thawing and violent shaking.  
Please centrifuge it, before using.

## QC Data



**Figure1. Use in IHC**

**Sample:** Monkey brain stem、Monkey cerebellum sections

**Primary Ab:** 1:100 Anti-Phospho-CAMK2B-G-D (Thr287) Antibody, Mouse Monoclonal,H2T

**Second Ab:** 1:2000 Mouse specific IHC polymer detection kit HRP/DAB