

## Anti-S15 Antibody, Mouse Monoclonal, B3T

Catalog: **TM01830GeM10-B3T**50 $\mu$ L

### Basic Info

**Host**

Mouse

**Conjugate**

None

**Concentration**

1mg/mL

**Physical State**

Liquid

**Clone No**

B3T

**Species Reactivity**

Predict reacts with: Human/Mouse/Rat

**Clonality, Isotype**

/

**Immunogen**

A synthetic peptide of S15 tag

**Purification**

Immunogen affinity purified

**Applications**

WB

### Property

**Form & Buffer :**

Supplied in PBS, 50% glycerol and less than 0.02% sodium azide, PH7.4.

**Specificity / Sensitivity :**

TM01830GeM10-B3T recognizes endogenous levels of S15 tag

### Applications

The application notes include recommended starting dilutions; optimal dilutions/concentrations should be determined by the end user.

WB: 1:1000-1:20000

### Usage and Storage

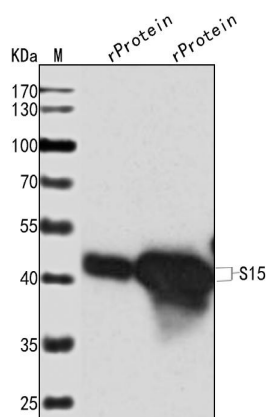
Store at 4°C for frequent use.

Aliquot and store at -20°C for 12 months.

Avoid repeated freezing/thawing and violent shaking.

Please centrifuge it, before using.

### QC Data

**Figure1. Use in WB****Sample:** Lane 1. rProtein; Lane 2.rProtein**Primary Ab:** 1:1000 Anti-S15 Antibody, Mouse Monoclonal, B3T**Second Ab:** 1: 20000 HRP Goat Anti-Rabbit IgG (H+L)