

Anti-ACTA1 Antibody, Mouse Monoclonal, B11T

ACTA, Alpha-actin-1, Actin, alpha skeletal muscle, intermediate form

Catalog: CM01105HuM10-B11T Size:100 μ L

Basic Info

Host	Mouse	Species Reactivity	Human/Mouse/Rat
Conjugate	None	Clonality, Isotype	/
Concentration	1.0 mg/mL	Immunogen	A synthetic peptide of human ACTA1
Physical State	Liquid	Purification	Immunogen affinity purified
Clone No	B11T	Applications	WB/IHC

Property

Form & Buffer: Supplied in PBS, 50% glycerol, PH7.4.
Specificity / Sensitivity: CM01105HuM10-B11T recognizes endogenous levels of human ACTA1.

Applications

The application notes include recommended starting dilutions; optimal dilutions/concentrations should be determined by the end user.
WB: 0.5~5 μ g/mL IF: 5~20 μ g/mL
IHC: 5~20 μ g/mL ICC: 5~20 μ g/mL

Usage and Storage

Store at 4 $^{\circ}$ C for frequent use.
Aliquot and store at -20 $^{\circ}$ C for 12 months.
Avoid repeated freezing/thawing and violent shaking.
Please centrifuge it, before using.

QC Data

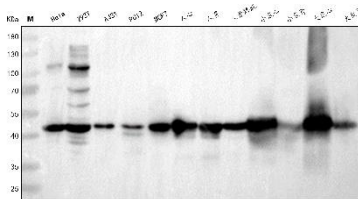
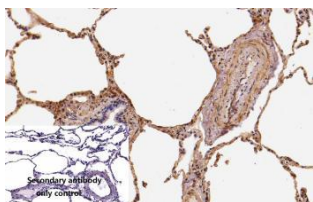


Figure 1. Application in WB

Western blot analysis of extracts of various cells lines and tissues, using ACTA1 antibody CM01105HuM10-B11T at 1 μ g/mL. Secondary antibody: HRP Mouse Anti-Rabbit IgG (H+L) at 1: 20000 dilution. Lysates/proteins: 25ug per lane. Blocking buffer: 3% nonfat dry milk in TBST. Detection: ECL Basic Kit. Exposure time: 3min.

QC Data**Figure 2. Application in IHC**

Immunohistochemistry (Formalin/PFA-fixed paraffin-embedded sections) analysis of human lung, monkey cerebellum, monkey skeletal muscle, monkey jejunum, monkey kidney, monkey liver, monkey lung, monkey rectum, monkey salivary gland, monkey submandibular gland sections labelling ACTA1 with purified CM01105HuM10-B11T at 5 μ g/mL dilution. Heat mediated antigen retrieval was performed using Heat mediated antigen retrieval using citrate buffer (PH6.0). Tissue was counterstained with Hematoxylin. Mouse specific IHC polymer detection kit HRP/DAB secondary antibody was used at 1: 2000 dilution. PBS instead of the primary antibody was used as the negative control.

For Research Use Only!