

## Anti-ACTB Antibody, Rabbit Polyclonal

Synonyms: Beta-actin

### Basic Info

#### Catalog

CP00001HuA10

#### Host

Rabbit

#### Conjugate

None

#### Size

100  $\mu$  L

#### Concentration

1.0 mg/mL

#### Physical State

Liquid

#### Species Reactivity

Human/Mouse/Rat

#### Immunogen

Recombinant human ACTB protein,  
fragment Met1~Phe375; UniprotKB:  
P60709

#### Purification

Antigen Affinity Chromatography

#### Applications

WB

### Property

**Form & Buffer:** Supplied in PBS, 50% glycerol, PH7.4.

**Specificity / Sensitivity:** Anti-ACTB Antibody, Rabbit Polyclonal  
recognizes endogenous levels of total ACTB protein.

### Usage and

### Storage

Shipped at 4°C.

Store at 4°C for frequent use.

Aliquot and store at -20°C for 12 months.

Avoid repeated freezing/thawing and violent shaking.

Please centrifuge it, before using.

### Applications

The application notes include recommended starting dilutions; optimal dilutions/concentrations should be determined by the end user.

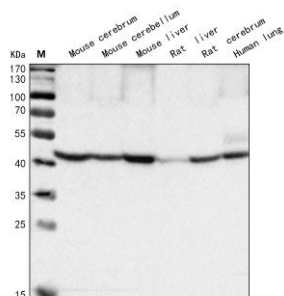
WB: 0.5~5  $\mu$  g/mL

IF: 5~20  $\mu$  g/mL

IHC: 5~20  $\mu$  g/mL

ICC: 5~20  $\mu$  g/mL

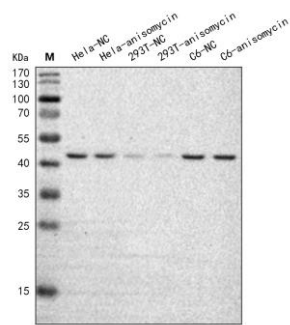
### QC Data



#### Figure 1. Application in WB

Western blot analysis of extracts of various tissues, using ACTB antibody (CP00001HuA10) at 1  $\mu$  g/mL. Secondary antibody: HRP Goat Anti-Rabbit IgG (H+L) at 1: 20000 dilution. Lysates/proteins: 25  $\mu$  g per lane. Blocking buffer: 3% nonfat dry milk in TBST. Detection: ECL Basic Kit. Exposure time: 120 s.

## QC Data



## Figure 2. Application in WB

Western blot analysis of extracts of various cell lines, using ACTB antibody (CP00001HuA10) at  $1 \mu\text{g/mL}$ . Secondary antibody: HRP Goat Anti-Rabbit IgG (H+L) at 1: 20000 dilution. Lysates/proteins:  $25 \mu\text{g}$  per lane. Blocking buffer: 3% nonfat dry milk in TBST. Detection: ECL Basic Kit. Exposure time: 120 s.

For Research Use Only!