

## Anti-FGL1 Antibody, Rabbit Polyclonal

Synonyms: FGL-1, HFREP1, HP-041, LFIRE1, Hepassocin

### Basic Info

#### Catalog

PA00054HuA10

#### Host

Rabbit

#### Conjugate

None

#### Size

100  $\mu$  L

#### Concentration

1.0mg/mL

#### Physical State

Liquid

#### Species Reactivity

Predict reacts with: Human/Mouse/Rat

#### Immunogen

Recombinant human FGL1 protein, fragment  
Leu23~Ile312; UniprotKB: Q08830

#### Purification

Antigen Affinity Chromatography

#### Applications

WB

### Property

**Form & Buffer:** Supplied in PBS, 50% glycerol, PH7.4.

**Specificity / Sensitivity:** Anti-FGL1 Antibody, Rabbit Polyclonal  
recognizes endogenous levels of total FGL1 protein

### Usage and

### Storage

Shipped at 4°C.

Store at 4°C for frequent use.

Aliquot and store at -20°C for 12 months.

Avoid repeated freezing/thawing and violent shaking.

Please centrifuge it, before using.

### Applications

The application notes include recommended starting dilutions; optimal dilutions/concentrations should be determined by the end user.

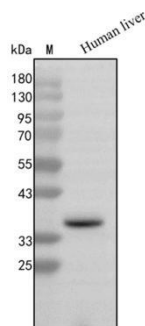
WB: 0.5~5  $\mu$ g/mL

IF: 5~20  $\mu$ g/mL

IHC: 5~20  $\mu$ g/mL

ICC: 5~20  $\mu$ g/mL

### QC Data



**Figure 1. Application in WB**

Western blot analysis of extracts of human liver, using FGL1 antibody (PA00054HuA10) at 1  $\mu$ g/mL. Secondary antibody: HRP Goat Anti-Rabbit IgG (H+L) at 1:10000 dilution. Blocking buffer: 5% nonfat dry milk in TBST. Exposure time: 3 s.

For Research Use Only!