

Anti-FGL1 Antibody, Rabbit Polyclonal

Synonyms: FGL-1, HFREP1, HP-041, LFIRE1, Hepassocin, Hepatocyte-derived fibrinogen-related protein 1, Liver fibrinogen-related protein 1

Basic Info

Catalog

PA00054MuA10

Host

Rabbit

Conjugate

None

Size

100 μ L

Concentration

1.0 mg/mL

Physical State

Liquid

Species Reactivity

Predict reacts with: Human/Mouse/Rat

Immunogen

Recombinant mouse FGL1 protein, fragment
Leu23~Ile314;

UniprotKB: Q71KU9

Purification

Antigen Affinity Chromatography

Applications

WB

Property

Form & Buffer: Supplied in PBS, 50% glycerol, PH7.4.

Specificity / Sensitivity: Anti-FGL1 Antibody, Rabbit Polyclonal recognizes endogenous levels of total FGL1 protein.

Usage and Storage

Shipped at 4°C.

Store at 4°C for frequent use.

Aliquot and store at -20°C for 12 months.

Avoid repeated freezing/thawing and violent shaking.

Please centrifuge it, before using.

Applications

The application notes include recommended starting dilutions; optimal dilutions/concentrations should be determined by the end user.

WB: 0.5~5 μ g/mL

IF: 5~20 μ g/mL

IHC: 5~20 μ g/mL

ICC: 5~20 μ g/mL

QC Data

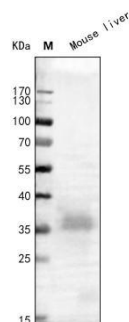


Figure 1. Application in WB

Western blot analysis of extracts of mouse liver, using FGL1 antibody (PA00054MuA10) at 1 μ g/mL. Secondary antibody: HRP Goat Anti-Rabbit IgG (H+L) at 1:10000 dilution. Blocking buffer: 5% nonfat dry milk in TBST. Detection: ECL Basic Kit. Exposure time: 0.6 s.

For Research Use Only!