

Anti-SOD1 Antibody, Rabbit Polyclonal

Synonyms: ALS, ALS1, IPOA, Superoxide Dismutase 1, Soluble, Amyotrophic Lateral Sclerosis 1,Adult, Superoxide dismutase [Cu-Zn]

Basic Info

Catalog

PA00152HuA10

Host

Rabbit

Conjugate

None

Size

100 μ L

Concentration

0.5 mg/mL

Physical State

Liquid

Species Reactivity

Human

Immunogen

Recombinant human SOD1 protein, fragment
Ala2~Gln154;

UniprotKB: P00441

Purification

Antigen Affinity Chromatography

Applications

WB

Property

Form & Buffer: Supplied in PBS, 50% glycerol, PH7.4.

Specificity / Sensitivity: Anti-SOD1 Antibody, Rabbit Polyclonal recognizes endogenous levels of total SOD1 protein.

Usage and Storage

Shipped at 4°C.

Store at 4°C for frequent use.

Aliquot and store at -20°C for 12 months.

Avoid repeated freezing/thawing and violent shaking.

Please centrifuge it, before using.

Applications

The application notes include recommended starting dilutions; optimal dilutions/concentrations should be determined by the end user.

WB: 0.5~5ug/mL

IF: 5~20ug/mL

IHC: 5~20ug/mL

ICC: 5~20ug/mL

QC Data

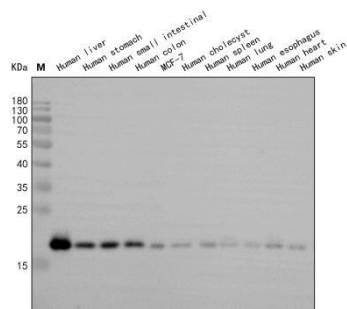


Figure 1. Application in WB

Western blot analysis of extracts of various cell lines and tissues, using SOD1 antibody (PA00152HuA10) at 0.5ug/mL. Secondary antibody: HRP Goat Anti-Rabbit IgG (H+L) at 1:10000 dilution. Blocking buffer: 5% nonfat dry milk in TBST. Detection: ECL Basic Kit. Exposure time: 15 s.

For Research Use Only!