

Anti-STING1 Antibody, Rabbit Polyclonal

Synonyms: NET23, ERIS, MPYS, MITA, TMEA173, Endoplasmic Reticulum Interferon Stimulator, Stimulator Of Interferon Genes Protein, Mediator of IRF3 activation

Basic Info

Catalog

PA00243HuA10

Host

Rabbit

Conjugate

None

Size

100 μ L

Concentration

1.0 mg/mL

Physical State

Liquid

Species Reactivity

Human

Immunogen

Recombinant human STING1 protein, fragment Leu159~Pro374;

UniprotKB: Q86WV6

Purification

Antigen Affinity Chromatography

Applications

WB

Property

Form & Buffer: Supplied in PBS, 50% glycerol, PH7.4.

Specificity / Sensitivity: Anti-STING1 Antibody, Rabbit Polyclonal recognizes endogenous levels of total STING1 protein.

Usage and Storage

Shipped at 4°C.

Store at 4°C for frequent use.

Aliquot and store at -20°C for 12 months.

Avoid repeated freezing/thawing and violent shaking.

Please centrifuge it, before using.

Applications

The application notes include recommended starting dilutions; optimal dilutions/concentrations should be determined by the end user.

WB: 0.5~5ug/mL

IF: 5~20ug/mL

IHC: 5~20ug/mL

ICC: 5~20ug/mL

QC Data

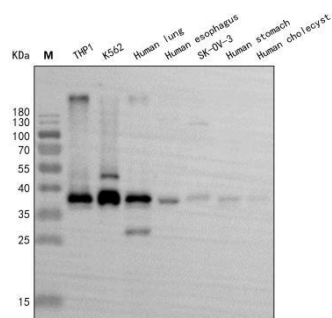


Figure 1. Application in WB

Western blot analysis of extracts of various cell lines and tissues, using STING1 antibody (PA00243HuA10) at 1ug/mL. Secondary antibody: HRP Goat Anti-Rabbit IgG (H+L) at 1:10000 dilution. Blocking buffer: 5% nonfat dry milk in TBST. Detection: ECL Basic Kit. Exposure time: 1 s.

For Research Use Only!