

Anti-PDHA1 Antibody, Rabbit Polyclonal

Synonyms: PDHCE1A, PHE1A, PHE1-A, PDHa, PDH-A, Pyruvate

Dehydrogenase(lipoamide)Alpha 1, Pyruvate Dehydrogenase E1 Component Subunit
Alpha,Aomatic Form,Mitochondrial, Pyruvate Dehydrogenase Alpha

Basic Info

Catalog

PA00253HuA10

Host

Rabbit

Conjugate

None

Size

100 μ L

Concentration

0.5 mg/mL

Physical State

Liquid

Species Reactivity

Human

Immunogen

Recombinant human PDHA1 protein,
fragment Phe30~Ser390;

UniprotKB: P08559

Purification

Antigen Affinity Chromatography

Applications

WB

Property

Form & Buffer: Supplied in PBS, 50% glycerol, PH7.4.

Specificity / Sensitivity: Anti-PDHA1 Antibody, Rabbit Polyclonal
recognizes endogenous levels of total PDHA1 protein.

Usage and

Storage

Shipped at 4°C.

Store at 4°C for frequent use.

Aliquot and store at -20°C for 12 months.

Avoid repeated freezing/thawing and violent shaking.

Please centrifuge it, before using.

Applications

The application notes include recommended starting dilutions; optimal
dilutions/concentrations should be determined by the end user.

WB: 0.5~5 μ g/mL

IF: 5~20 μ g/mL

IHC: 5~20 μ g/mL

ICC: 5~20 μ g/mL

QC Data

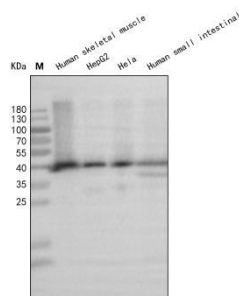


Figure 1. Application in WB

Western blot analysis of extracts of various cell lines and
tissues, using PDHA1 antibody (PA00253HuA10) at 1 μ g/mL.

Secondary antibody: HRP Goat Anti-Rabbit IgG (H+L) at 1:10000
dilution. Blocking buffer: 5% nonfat dry milk in TBST.

Detection: ECL Basic Kit. Exposure time: 3.6 s.

For Research Use Only!