

## Anti-TUBB2A Antibody, Rabbit Polyclonal

Synonyms: Tubb2

### Basic Info

#### Catalog

PA01145HuA10

#### Host

Rabbit

#### Conjugate

None

#### Size

100  $\mu$ L

#### Concentration

0.5 mg/mL

#### Physical State

Liquid

#### Species Reactivity

Human/Mouse/Rat/Monkey

#### Immunogen

Recombinant TUBB2A protein,

UniprotKB: Q13885

#### Purification

Antigen Affinity Chromatography

#### Applications

WB

### Property

**Form & Buffer:** Supplied in PBS, 50% glycerol, PH7.4.

**Specificity / Sensitivity:** Anti-TUBB2A Antibody, Rabbit Polyclonal recognizes endogenous levels of total TUBB2A protein.

### Usage and Storage

Shipped at 4°C.

Store at 4°C for frequent use.

Aliquot and store at -20°C for 12 months.

Avoid repeated freezing/thawing and violent shaking.

Please centrifuge it, before using.

### Applications

The application notes include recommended starting dilutions; optimal dilutions/concentrations should be determined by the end user.

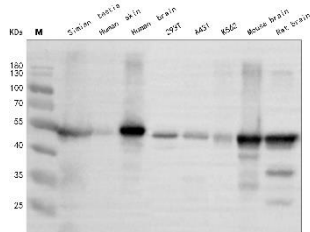
WB: 0.5~5  $\mu$ g/mL

IF: 5~20  $\mu$ g/mL

IHC: 5~20  $\mu$ g/mL

ICC: 5~20  $\mu$ g/mL

### QC Data



**Figure 1. Application in WB**

Western blot analysis of extracts of various cell lines and tissues, using TUBB2A antibody (PA01145HuA10) at 1  $\mu$ g/mL. Secondary antibody: HRP Goat Anti-Rabbit IgG (H+L) at 1:10000 dilution. Blocking buffer: 5% nonfat dry milk in TBST. Detection: ECL Basic Kit. Exposure time: 0.5 s.

For Research Use Only!